

[View this email in your browser](#)



# REPRIEVE

## Randomized Trial to Prevent Vascular Events in HIV

### Trial Status

February 25th, 2019

**7555** participants are enrolled

**34** participants are in screening

---

In case you didn't hear the great news, [we have received approval from the NIH to enroll all eligible participants in screening!](#)

Participants may be enrolled through March 24th, 2019.

Randomization will be closed after March 24th. Please make ALL efforts to enroll participants by this date as there will be no exceptions after this time.

---

***A Thank You Message to REPRIEVE site teams AND participants from the NIH***



Watch the video from the NIH recognizing the incredible accomplishment of enrolling over 7500 participants into REPRIEVE. Please share this with your REPRIEVE participants!



***And the winners are...***

**1st Place:** Parirenyatwa, CRS 30313

**2nd Place:** Thai Red Cross AIDS Research Center, CRS 31802

**3rd Place:** Tropical Medicine Foundation, CRS 31946

[Click here](#) to see a complete list of all sites who enrolled 5 or more participants over the course of the challenge!

---

*The top 3 enrolling sites over the course of the challenge will receive \$1000 USD, \$750 USD, or \$500 USD respectively for the extra effort to enroll.*

*Any site that enrolls 5 or more participants during the course of the campaign will receive 100 USD.*

The REPRIEVE CCC will be reaching out to the winners during the month of March to coordinate prizes.

***Congratulations to ALL sites!***

---

***Read about the REPRIEVE participant appreciation event at CRS 31441, BJMC!***



REPRIEVE staff at CRS 31441, Byramjee Jeejeebhoy Medical College (BJMC) in Pune, India, hosted nearly 140 REPRIEVE participants for an awareness event and luncheon promoting healthy habits and engagement in care. Informational banners on alcohol and tobacco use, and exercise and balanced diet were posted throughout the luncheon. Guests also got to enjoy musical performances and share their personal experiences through an open-mic forum.

*"The ultimate goal of research is to improve patient health, but often what's lost in aggregated clinical data is the tremendous personal impact that study participation has for patients and their families. Gatherings among team members and participants*

*help foster community and a shared mission to improve disease prevention, diagnosis, and treatment."*

**Thank you** to the REPRIEVE Team at BJMC for hosting a tremendous event for your participants! To read more about the event [click here](#).

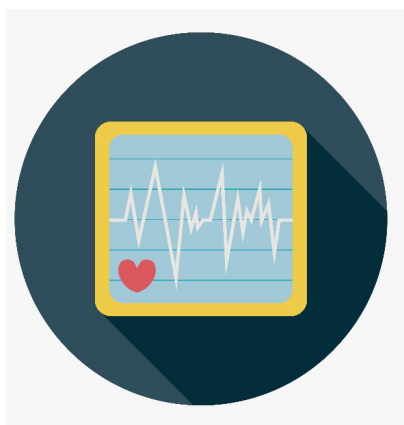
If your site has taken a unique approach to retention of participants, let us know by emailing [reprieve.news@fstrf.org](mailto:reprieve.news@fstrf.org).



## A Reminder About Shipment Evaluations

The repository (BRI), emails Shipment Evaluation Forms to sites. If there was a problem with the shipment received, the site ***must respond to the Shipment Evaluation Form and reconcile all discrepancies (when possible) within one (1) week of receiving the Shipment Evaluation form from BRI*** in order to avoid or reduce the penalty.

If you need assistance to resolve an issue identified in a Shipment Evaluation Form, contact the REPRIEVE Laboratory Committee at [reprieve.labcom@fstrf.org](mailto:reprieve.labcom@fstrf.org).



## Be Prepared to Return ECG Machines

Once enrollment is complete the REPRIEVE CCC will be reaching out to sites to return their ECG machine. In anticipation of this **please do the following**:

1. Make sure your site has transmitted all ECGs to IQVIA.
2. Confirm the original ECG tracings are available in participant files.

### Expectations of sites prior to shipping:

- Sites are expected to pack the ECG machine and accessories in the original box including all accessories (cables and power cord).
- Sites are not expected to return unused electrodes or paper.
- Sites need to return the device to the equipment warehouse as per instructions that will be provided.

If your site will not be enrolling additional participants and you would like to return your ECG machine now, please email Emma Kileel, [ekileel@mgh.harvard.edu](mailto:ekileel@mgh.harvard.edu)



National Institute of  
Allergy and  
Infectious Diseases

**DAIDS RSC**  
Regulatory Support Center

Have you visited the DAIDS RSC website recently?

There are some very useful resources on the website that will help ensure a successful monitoring visit! Click on the links below to make sure you are following the policies and procedures:

[Safety](#) | [Protocol Registration](#) | [CRF Management](#) |  
[Informed Consent Process Information](#)



[Click here](#) to read the memo from the OCSO Monitoring Operating Branch (MOB) pertaining to a **revision in the monitoring process**.



**Save the Date!**  
**Tuesday, March 19th, 2019**  
**1:00 – 2:00 PM ET**

For the March Monthly Site Call!  
Watch for the email announcement with  
more details.

### ***REPRIEVE (A5332): Are you up to date?***

*For A5332 please use:*

*Protocol Version 4.0 dated 03/28/2018*

*V4.0 LOA #1 dated 05/16/2018*

*MOPS Version 4.0 dated 10/16/18*

*A5332 LPC for ACTG Sites Version 4.0 dated 03/22/2018*

*A5332 LPC for Non-ACTG Sites Version 4.0 dated 07/23/2018*

*These documents are on the [A5332 PSWP](#)*

### ***Mechanistic Substudy of REPRIEVE (A5333s): Are you up to date?***

*For A5333s please use*

*Protocol Version 4.0 dated 03/28/2018*

*MOPS Version 4.0 dated 04/10/2018*

*A5333s LPC Version 4.0 dated 03/23/2018*

*These documents are on the [A5333s PSWP](#)*

**For future reference, all newsletters are**

available on the [REPRIEVE Website](#).

*We welcome ideas and suggestions for future newsletters. Please submit any comments or suggestions to the REPRIEVE News team at [reprieve.news@fstrf.org](mailto:reprieve.news@fstrf.org)*



---

**REPRIEVE Trial Clinical Coordinating Center**

Massachusetts General Hospital  
55 Fruit Street, 5LON 207  
Boston, MA USA 02144

**Our mailing address is:**

[reprieve.news@fstrf.org](mailto:reprieve.news@fstrf.org)

Want to change how you receive these emails?

You can [update your preferences](#) or [unsubscribe from this list](#).

---

This email was sent to <<Email Address>>

[why did I get this?](#) [unsubscribe from this list](#) [update subscription preferences](#)

Massachusetts General Hospital · 5 Longfellow Place · Boston, MA 02214 · USA

