

[View this email in your browser](#)



REPRIEVE

Randomized Trial to Prevent Vascular Events in HIV

March 2023 Table of Contents

- [THANK YOU!](#)
- [New Site Contracts](#)
- [Lab Tips](#)
- [Site Spotlights!](#)
- [Vital Status and Endpoint Assessment CRF](#)
- [Investigator's Meeting during CROI 2023](#)
- [A Note About Regulatory Files and Essential Documents](#)
- [National Wear Red Day](#)
- [2023 Participant Newsletter](#)
- [Join Us for the Next Team/Site Call April 18th](#)
- [Are You Up to Date?](#)



THANK YOU! REPRIEVE site teams for the tremendous effort to meet the data entry and query resolution deadlines in preparation for the DSMB meeting on Thursday, March 30th! We will provide you with updates from the meeting as soon as we are able to.



New Site Contracts

As you know, we received an extension grant from the NIH that will begin May 1, 2023 and take us through the end of the trial. Given the new extension grant/source of funds, we are required to execute new site contracts. The new contracts have been distributed. Please know that the financial terms of the new contracts are similar to the original and align with A5332 Protocol Version 6.0.

In order to ensure a seamless continuation of REPRIEVE, **we ask that you return a signed contract by April 15, 2023**, to the REPRIEVE finance team (REPRIEVE.finance@mgh.harvard.edu). We will then return to you a fully executed document by **May 1, 2023**.

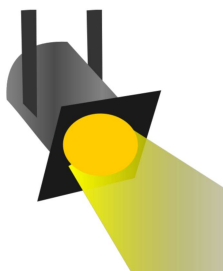


The ACTG Laboratory Technologists Committee (LTC) recently shared guidance for processing laboratories on the handling of protocol specimens to maximize the safe arrival of frozen shipments and to minimize any loss of protocol specimens shipped to BRI.

Please remember to:

1. Stagger shipments
2. Ship fewer storage boxes together and ship more frequently
3. Monitor and track every shipment

[Click here](#) for the full memo



Site Spotlights!
UCSD Antiviral Research Center CRS
(701)
Joint Clinical Research Centre
(JCRC)/Kampala CRS (12401)



The **UCSD Antiviral Research Center CRS**, located in San Diego, California, USA, has been a tremendous contributor to REPRIEVE! See below for a summary of their site's outstanding performance:

Participants Enrolled: **49**
Participants in Follow-Up: **41**
Off-Treatment Rate: **2.7 / 100PY**
Off-Study Rate: **1.9 / 100PY**
% Expected Data Submitted: **99%**
% Expected Specimens Shipped: **100%**
% Data Timeliness (Last 3 Months): **100%**

Thank you, UCSD Antiviral Research Center CRS team, for all your efforts and for sharing your team photo with us!



The **Joint Clinical Research Centre (JCRC)/Kampala CRS**, located in Kampala, Uganda, has been a tremendous contributor to REPRIEVE! See below for a summary of their site's outstanding performance:

Participants Enrolled: **181**
Participants in Follow-Up: **173**
Off-Treatment Rate: **0.7 / 100PY**
Off-Study Rate: **0.6 / 100PY**
% Expected Data Submitted: **100%**
% Expected Specimens Shipped: **100%**
% Data Timeliness (Last 3 Months): **95%**

Thank you, JCRC/Kampala CRS team, for all your efforts and for sharing your team photo with us!



A Reminder About the Vital Status and Endpoint Assessment CRF (VSW0025)

For participants who are off-study, the Vital Status and Endpoint Assessment CRF (VSW0025) should be completed annually beginning one year after the Date of Off-Study entered on the RP0001 CRF.

Keying this form is *based on the attempt of contacting a participant who is off study* in an effort to obtain vital status or endpoint information. Even if contact is not obtained, the attempt and date of attempt should be recorded in Section A of the log.

Do not enter on-study data (i.e. contacts, attempts at contact or events) from PRIOR to off study date on the VSW0025 CRF.

Should contact be made, additional information about

the participant's vital status should be recorded in Section B of the VSW0025.



REPRIEVE

INVESTIGATOR'S MEETING @ CROI 2023



The REPRIEVE team hosted an Investigator's Meeting during CROI 2023! Nearly 200 REPRIEVE Trial collaborators attended in-person and remotely. Trial updates and findings from three new abstracts were shared during the meeting. Thank you to everyone who was able to join the meeting and for helping to make it a success!

[Click here](#) for slides from the meeting in case you weren't able to join.

For a list of all REPRIEVE abstracts and presentations at CROI 2023, click [here](#).



A Note About Regulatory Files and Essential Documents

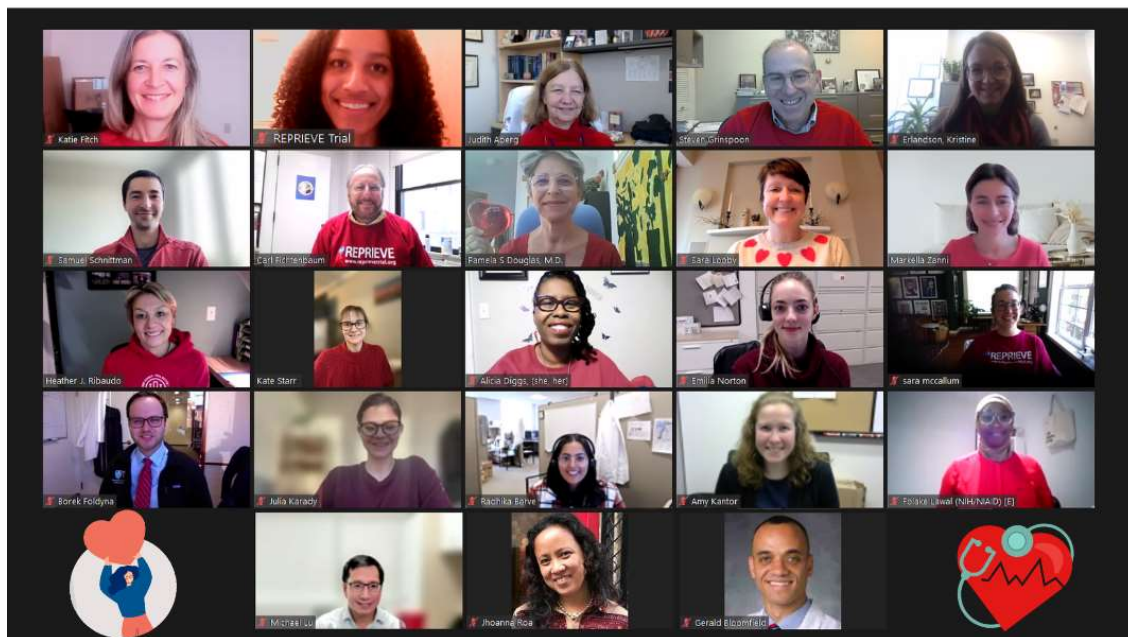
Please remember to review your regulatory files and ensure that essential documents are up to date. [Click here](#) for guidance from the DAIDS SCORE Manual that includes a description of essential documents with a recommended location where they should be filed during the conduct of a clinical trial.



On National Wear Red Day in February, members of the REPRIEVE Publications Committee wore **red** to recognize the importance of heart disease prevention!

Thank you REPRIEVE Publications Committee!!!

HAPPY HEART HEALTH MONTH FROM THE REPRIEVE TEAM!






2023 Participant Newsletter

The annual REPRIEVE Participant Newsletter* will be available soon!

The newsletter is a great way to keep participants updated about and engaged in REPRIEVE. This year's newsletter will include a message from REPRIEVE leadership, REPRIEVE facts, heart health tips, a few words from three REPRIEVE participants, and other exciting updates!

**The newsletter will be approved by the IRB for the CCC, please submit to your local IRB/EC as per your local requirements.*



Join Us for the Next Team/Site Call

April 18th

If you have any questions in advance of the site call we'd love to hear from you! Please email them to [Katie Fitch](#) at the REPRIEVE CCC.

1:00 PM US (EST)
1:00 PM HAITI (EST)
1:00 PM PERU (PET)
2:00 PM PUERTO RICO (AST)
3:00 PM BRAZIL (BRT)
8:00 PM BOTSWANA (CAT)***
8:00 PM SOUTH AFRICA (SAST)***
8:00 PM ZIMBABWE (CAT)***
9:00 PM UGANDA (EAT)***
11:30 PM INDIA (IST)***
1:00 AM 01/18/2023 THAILAND (ICT)***

***We do not expect site staff to join these calls during their off-work hours. Instead we will update you on other scheduled calls, e.g., your calls with the ACTG NCC.

Remember that questions are always welcome at actg.corea5332@fstrf.org and if there are slides used for a call, they are available on the PSWP in the Protocol Training >> Site Calls folder.

REPRIEVE (A5332): Are You Up to Date?

For A5332 please use:

Protocol Version 6.0 dated 05/16/2022

MOPS Version 6.0 dated 12/14/2022

LPC for ACTG Sites Version 6.0 dated 06/03/2022

LPC for Non-ACTG Sites Version 6.0 dated 09/08/2022

FAQs dated 09/02/2022

Updated! Coenrollment Guidelines dated 02/06/2023

These documents are on the A5332 PSWP

***For future reference, all newsletters are available on the
REPRIEVE Website***

We welcome ideas and suggestions for future newsletters. Please submit any comments or suggestions to the REPRIEVE News team at reprieve.news@fstrf.org.



Like, comment, share, and retweet!

REPRIEVE Trial Clinical Coordinating Center

Massachusetts General Hospital
55 Fruit Street, 5LON 207
Boston, MA USA 02114

Want to change how you receive these emails?
You can [update your preferences](#) or [unsubscribe from this list](#).

This email was sent to mdiggs@mgh.harvard.edu
[why did I get this?](#) [unsubscribe from this list](#) [update subscription preferences](#)
Massachusetts General Hospital · 5 Longfellow Place · Boston, MA 02214 · USA

